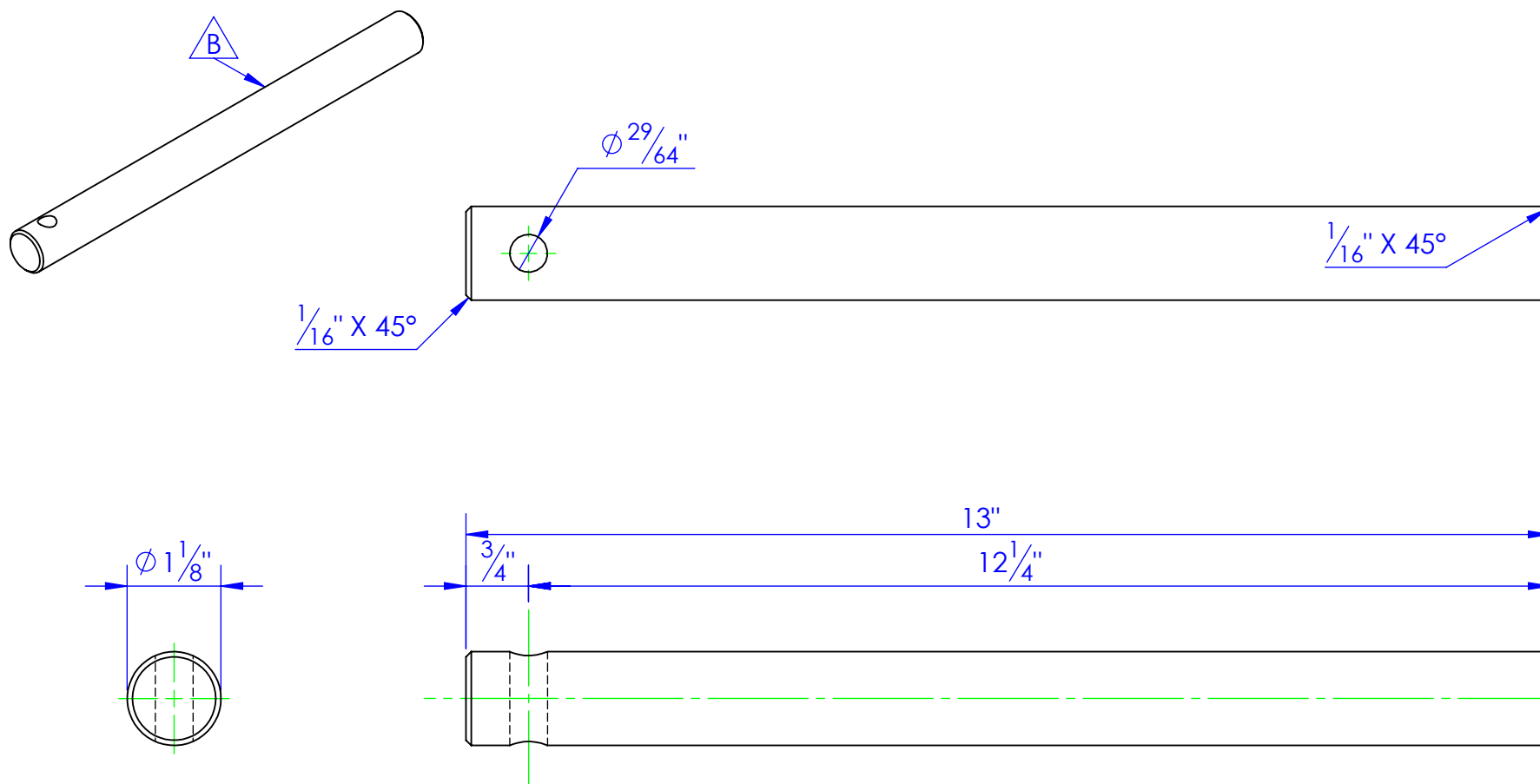


PART NUMBER	DESCRIPTION	Material
FP-SP118A-1	SHAFT, SPINNER	CF ANN 4142 1-1/8 RDx 12

REVISIONS			
REV.	DESCRIPTION	DATE	APPROVED
B	UPDATED TO MATCH 3D MODEL	12/17/2012	



**PROPRIETARY AND CONFIDENTIAL**  
 THE INFORMATION CONTAINED IN THIS  
 DRAWING IS THE SOLE PROPERTY OF TRIPLE  
 C INC. ANY REPRODUCTION IN PART OR  
 AS A WHOLE WITHOUT THE WRITTEN  
 PERMISSION OF TRIPLE C INC. IS PROHIBITED.

DIMENSIONS ARE IN INCHES TOLERANCES: FRACTIONAL $\pm 1/16$ ANGULAR: MACH $\pm 1$ BEND $\pm$ TWO PLACE DECIMAL $\pm 010$ THREE PLACE DECIMAL $\pm 005$	
MATERIAL	CF ANN 4142 1- 1/8 RDx 12
DO NOT SCALE DRAWING	

NAME	DATE
DRAWN	HEATH 12/17/2012
PART #	FP-SP118A-1
ASM #	
COMMENTS:	
SHAFT, SPINNER	

P.O. BOX 248, SABETHA, KS 66534			
<b>TRIPLE C</b> INC.			
SIZE <b>A</b>	DWG. NO. <b>90-1601 B</b>	REV. <b>B</b>	
SCALE:1:2	WEIGHT: 3.62	SHEET 1 OF 1	